

# Communications Setup

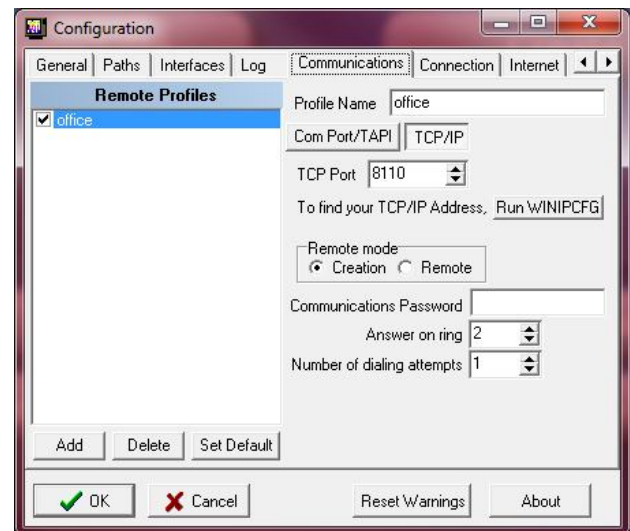
Definitions of terms used.

**Editing Unit:** The editing unit is the computer in your office that you create your pages and schedules on.

**Remote Unit:** The remote unit is the computer located at your head-end which displays your information 24/7.

## Editing Unit Communications Setup

1. Click on the **Configuration** button from the Main Menu.
2. Click on the **Communications** tab.
3. There will be a blank profile name on the upper right side of the Communications settings. Enter in a short description of the profile that you are setting up. For example "office".
4. Select the the **TCP/IP** option for network communications. (Com/Tapi is used in conjunction with a null modem cable, a telephone modem or a direct connect parallel cable. If you are interested in this feature please call DSI Tech Support.)
5. The TCP port will default to 8110. Leave it this way unless your network administrator tells you otherwise.
6. Set the Remote Mode to Creation.
7. A password can also be set to prevent unauthorized people from connecting to the remote system.
8. "Answer On Ring" and "Number of Dialing Attempts" are used in conjunction with "Com Port/TAPI" so please ignore them unless you are using a dial-up modem.
9. To add a second remote communication profile, click on **Add** and follow the above steps.
10. To use a specific remote communication profile as the default, click on the communications profile that you wish to use from the remote profiles listed on the left side and then click on **Set Default**.



## Remote Unit Communications Setup

1. Follow the same instructions as For The Editing Unit except for Step 6. Set the Remote Mode to Remote.

**TIP:** Use a static IP addresses for the remote unit.

## Connect Now

When you click on the Connect Now button from within the software's Main Menu, one of two things will happen depending on how your system is set up and what profiles are defined. 1. The Phonebook will appear (this is the most common scenario). 2. The Communications Profile window will appear.

## Communications Profile

1. The Communications Profile window will only appear if you have more than one Remote Profile set up in Configuration.
  - a. For information on setting up multiple Remote Profiles, please refer to the Editing Unit Communications Setup section.

2. Select a Profile.
3. The Phonebook will automatically appear.

## Phonebook – Add an Location

The first time you access the Phonebook there will be nothing to select from.

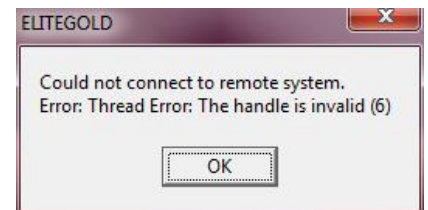
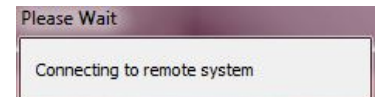
Follow these steps to add an entry.

1. Click on the New Entry button.
2. In the Display Name field type in the name of the Remote location. This could be the Property name or the name of city. It doesn't really matter as long as you know what location this name refers to.
3. In the TCP Address field type in the IP of the remote computer. For example: 74.25.0.175
4. Now click on the X in the top right corner of the window to close it and save your entry.
5. Click on the Connect Now button to get back to the Phonebook.

You can create an entry for each remote unit you wish to connect to. This allows you to update multiple head end locations from one editing computer.

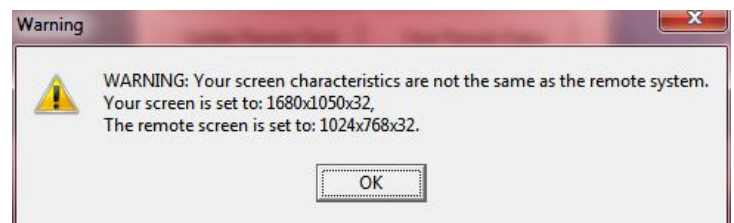
## Connecting to a Remote Unit

1. To connect to a remote unit, click on the entry name in the left column and then click on the Select button OR you can simply double click on the entry name.
2. The system will now attempt to connect to the remote unit.
  - a. If the remote unit is not running, improperly set up, or your configuration settings are incorrect a message will appear, stating "Could not connect to remote system" or "You must configure the remote communications port first".
  - b. Go back and check settings. You may have to refer to Configuration /Communications section of manual for more details.



## Video Settings Check

1. When you are successful in connecting to the remote unit, the software will perform a video settings comparison between the editing unit and Display Only system.
2. This check occurs automatically and is transparent unless the resolution or color depth is different.
3. This Warning example shows that the editing unit has a resolution of 1680x1050 while the remote unit has a resolution of 1024x768. The color depth is the same.
  - a. This warns you to make sure pages are created in a resolution of 1024x768.
  - b. Click on the OK button to get to the Online Communications window.



## Online Communications Menu

There are 14 buttons in the Online Communications menu plus a progress/log section at the bottom.

### Retrieve Remote Profile

This is used to access the remote site's configuration file.

Uses include checking the remote unit's:

- version number
- key#
- monitor resolution

### Retrieve File

This button does the same thing as Display Remote Directory. Please refer to that button for how to retrieve files from the remote unit.

### Update Remote Clock

The time on the remote unit will be set to the same time as the editing unit. If the remote unit is in a different time zone, then this feature will not be useful.

### Display Local Directory

This will bring up an explorer window which will let you *view the files on the editing unit*. It defaults to the \DSI95\Pages directory, which is where your pages and schedules are usually stored.

From here you can select any file to send to the remote unit.

If you select your schedule file and say Yes to the prompt "Send all associated pages and graphics", then it will send the schedule, all the pages in the schedule and all the graphics & videos on the pages in the schedule.

### Display Remote Directory

This will bring up an explorer window which will let you *view the files on the remote unit*.

The path defaults to the \DSI95\Pages folder where most files are saved.

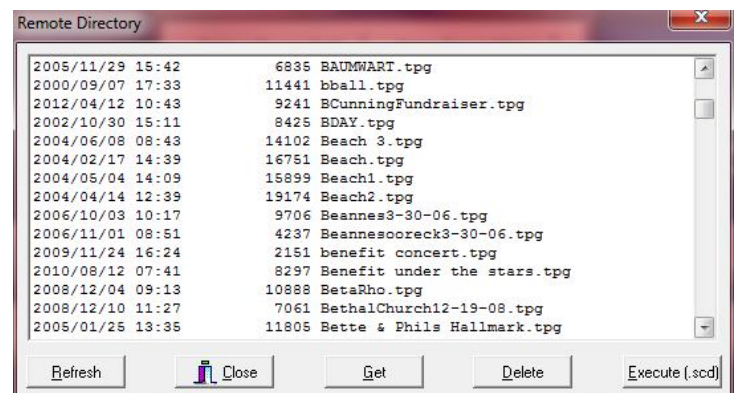
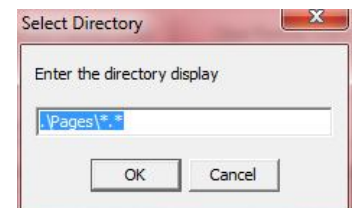
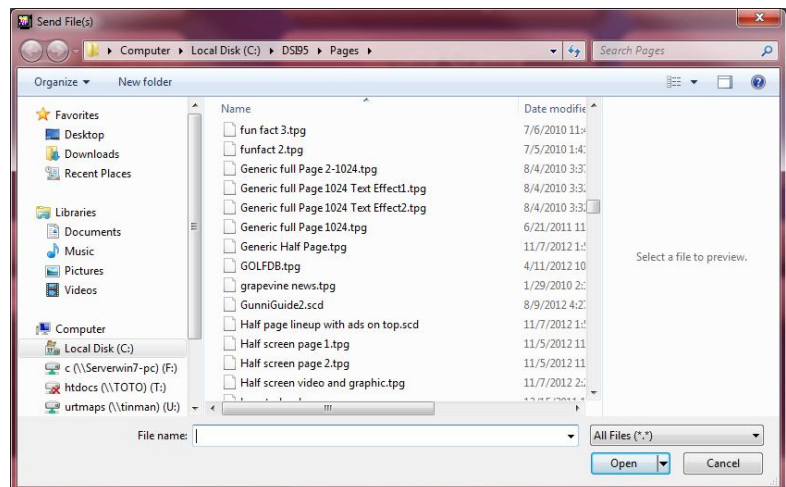
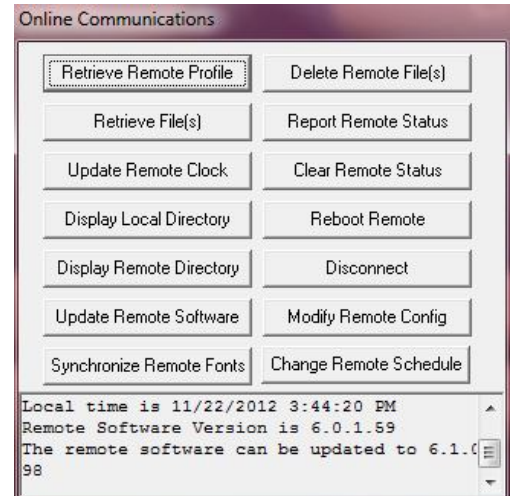
If you wish to view just a certain type of file, such as pages only, change \*.\* to \*.TPG and then click OK.

**Refresh Button:** Click on this button to refresh the list of files on the remote unit.

**Close Button:** This will close the remote directory listing and return you to the Online Communications Menu.

**Get Button:** Click on a file name and then click on GET. The file on the remote unit will be copied into the \DSI95\Pages directory on the editing unit. Multiple files may be selected and received at one time by holding the control key on the keyboard.

**Delete Button:** Click on a file name and then click on DELETE. The file on the remote unit will be



deleted. Hold the control button on the keyboard to select multiple files to delete all of them at one time.  
**Execute (.scd) Button:** Click on a schedule file name and then click on Execute. The schedule file will immediately start to display on the remote unit. It will also ask you if you want to make this the Master Schedule.

<DIR>.. To move up to the \DSI95 folder, double click this line.

## Update Remote Software

This button has been discontinued and should not be used.

## Synchronize Remote Fonts

This button has been discontinued and should not be used.

## Delete Remote File

This button does the same thing as Display Remote Directory. Please refer to that button for how to delete files from the remote unit.

## Report Remote Status

A status log file will be retrieved from the remote unit, and immediately display for you to look at. This helps to keep track of status files if you have more than one remote unit.

Examining this file can point to possible problems with the remote unit. Missing graphics or pages, empty schedules, and other similar type errors are recorded with a Time & Date stamp.

## Clear Remote Status

The status log file will be erased from the remote unit. Once the schedule is displayed again, it will create a new one automatically.

## Reboot Remote

This will disconnect the connection between the 2 computers and return the editing unit back to the Main Menu. **The Remote unit will reboot & automatically, start up the DSI program, and start displaying your own schedule** (if setup properly in the Master Schedule Configuration).

If a new schedule was sent to the remote unit, the new schedule will now be activated and used instead of the old one.

## Disconnect

This will only disconnect the 2 computers and return the editing unit back to the Main Menu.

If a new schedule was sent to the remote unit, the new schedule will now be activated and used instead of the old one.

## Modify Remote Config

Use this to enable/disable various tracking methods.

## Change Remote Schedule

1. This will bring up a window which will let you view files on the editing unit and defaults to the C:\DSI95\Pages folder.
2. Click on a file name and then click on OPEN.
3. You will now be asked "Do you want to make this a permanent change?".
  - a. If you click on Yes, then the Master Schedule in the remote unit's Configuration will be set to this. So if the remote unit is rebooted, this schedule will start displaying.
  - b. If you click on No, then the Master Schedule in the remote unit's Configuration will NOT be altered.

4. The schedule you have chosen will now begin to display on the remote unit.

### **Progress/Log Section**

The Progress/Log section shows what is transpiring in the communications. It shows which file is currently being sent, its size, how much has been sent, and the number of bytes/second at which it is being sent.

When sending a schedule, and all of its pages and associated files, the very last file to be sent will be the actual schedule file.

### **How to Update a Remote Schedule**

This is a quick over-view of how to update the schedule at the remote unit once all the communications are setup.

1. On the editing unit get to the DSI Main Menu.
2. Click on the Connect Now button.
3. Click on the remote unit from the list in the Phonebook and click on the Select button.
4. Once the Online Communications window appears click on the Display Local Directory button.
5. Find your schedule and click on it and then click on the Send button.
6. Click on Yes to send all files associated with the schedule.
7. When the files have finished sending, click on the Disconnect button.